



Dormer House


'Holiday Nest'

Monday 10th

February-

Tuesday 21st

February.



Booking can be made
throughout the
holidays. However, to
avoid disappointment
please book a.s.a.p.

Phone 01608650758

We require 48hrs notice
for cancellations.

Time table:

Week Beginning:	Monday	Tuesday	Wednesday	Thursday	Friday
13 th February	A.M Art Attack. P.M Park Activities/ Sports. AFRICAN DRUMMING 10-12	Valentine crafts. Valentine cards, glass bead decorating, sun catchers and much more!	Make it, Bake it, Eat it. 10-12	Paint your own Pottery-Mothers day special. 10-12	Forest School/ Nature walk. 9.30-11.30
21 st February	A.M Art Attack. P.M Park Activities/ Sports.	Make it, Bake it, Eat it. 10-12	Term Time	Term Time	Term Time

Our holiday club runs everyday throughout the school holiday for children aged 2-11yrs.

8.00am-6.00pm



'Release the Rhythm'

African Drumming Workshop

Monday 13th February

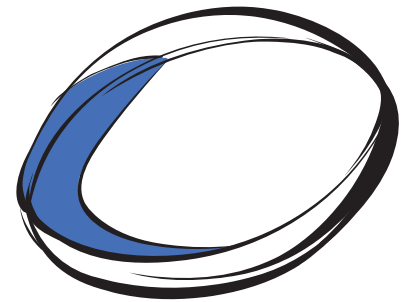
10-12

Years 2 and above



Cost £16

Dormer sports



Monday afternoons are sports sessions in the park.

Main School children only.

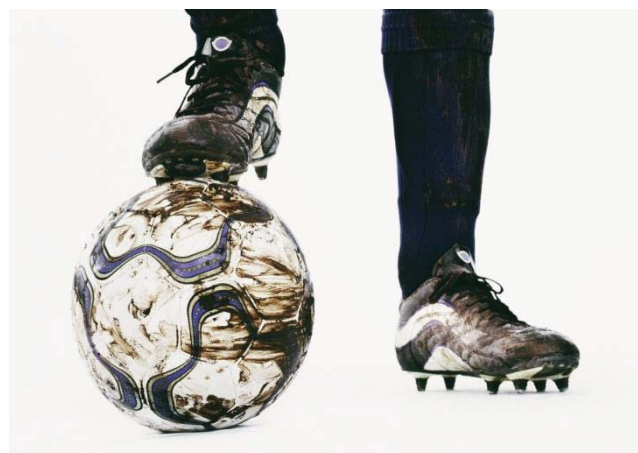
Games to include:

Football

Tag Rugby

Team Games

Parachute Games



Valentines Make it, Bake it, Eat it!

Week 1: Wednesday morning

Week 2: Tuesday morning

Biscuits, cakes, mini pizzas,
fruit frisbees etc.



Or

Bring along your favourite
recipe and we can make it!

10.00-12.00





Valentine crafts day

Tuesday 14th February
Throughout the day.

*Make a beautiful card or gift for the
one you love!*

Crafts to include:

valentine cards
Heart bunting
Glass bead decorating
Heart sun catchers
Marble ink hearts



BEATRIX CRAFT LOUNGE
is coming to Dormer.



MOTHER'S DAY PRESENT
SPECIAL!

*Come along and put your
individual stamp on a lovely gift
for Mother's day.*



*Thursday 16th February
10-12*

£12 extra charge



Forest School Sessions.

Friday mornings are Forest School sessions for classes Skylarks+

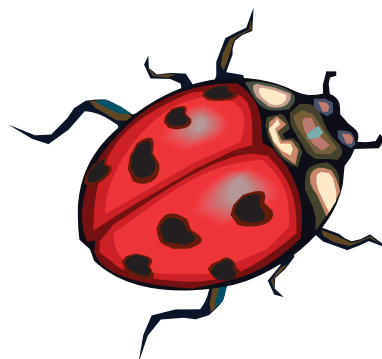
What is *Forest School*?

Forest School uses the outdoor environment to help children learn. Children are encouraged to develop their independence skills, improve their decision making and raise their self esteem.

Come and dig mud pits, learn how to use tools safely, play outdoor games, bug hunt and learn about the world around us.

Please provide your child with:

A vest or under layer, a thin long sleeved top, a thick jumper, long trousers and wellies. We do have a limited number of waterproof suits but if possible please provide waterproof clothing.





General Activities.

Throughout the holidays we offer a variety of daily activities for the Nursery and Main School children to choose from, including:

- Arts and Crafts
- Board Games and Puzzles
- Nintendo Wii
- Outdoor Play Equipment
- Construction Sets
- Cars and Trains
- Role Play
- Table Tennis
- Visits to the Park
- Early Years Curriculum Activities

If your child has a favourite toy or game they would like to play with whilst at holiday club, please feel free to send it with them to share.



What to bring!

Please send your child with the following essentials:

- **A snack and a still drink.**

As we are working towards being a healthy school, we would be grateful if you could monitor the snack your child brings into school. We recommend a piece of fruit, raisins or other dried fruits. Chunks of raw vegetables, cheese chunks or strips and a still drink in a carton.

However, in holiday club we have "Tuesday Treats" and "Friday Feasts". On these days the children may bring in a treat such as crisps, cheddars or chocolate.

- **A spare change of clothes for younger children.**
- **A warm waterproof coat, hat, gloves, scarf and wellies.**

We provide a daily cooked lunch and a sandwich tea. Drinks are available throughout the day.

The focus of our club is for children to have as much FUN as possible! With a programme of over 14 activities on offer, including everything from making Valentine crafts, cards and gifts, to Paint your own Pottery- Mothers day special and also our 'Weekly Art Attack' including painting, collage and clay! There are 'Make it, Bake it, Eat it' sessions and a few competitions along the way. In fact there is a huge variety of activities on offer to suit both the sporty and more creative child.

PRICES

Hourly rate £4.55
Daily rate £30.00 (+7hrs)

Prices include
Breakfast 8.00am-8.30am
Lunch 12.30pm-1.00pm
Tea 4.30pm-5.00pm



Holiday Club Booking Form

Please enter the times/days you would like your child to attend.

Name of child/children: _____ Age: _____

Contact telephone numbers: _____

Emergency contact number (someone different to parents): _____

Doctors telephone numbers: _____

Permission to administer calpol. Yes/No

Permission to go to Forest School. Yes/No

Any allergies/ special instructions: _____

All holiday club bookings will be invoiced by the School Bursar in March.

Please tick optional extras required.

	Mon	Tues	Weds	Thurs	Fri
Week 1 13 th February - 17 th February	Drumming <input type="checkbox"/>			Pottery <input type="checkbox"/>	
Week 2 20 th February -21 st February			Term Time	Term Time	Term Time

**Please return this form to
Miss Dee a.s.a.p**

